



931AM Co., Ltd.



Furniture Design  
Interior Design  
Architecture  
Turnkey Project

Who are we?

931AM Co., Ltd.





## WHERE WE'VE START...

As more than a decade of experiences, from retail design, office design and residential design.

the people with those knowledge and passion in their work decided to join forces to create a better everyday life by providing a great solution through the design and offer a complete turnkey services to built people's dream, from scratch to reality.

## KEY RESUME



### LADDAWAN NAPATTANAKIJ

Co-founder of 931AM  
+66897771230

Experienced Interior Designer with a demonstrated history of working in the world's biggest furniture retailer. Skilled in space planning, customer service, and retail planning. Along with the understanding people's life at home and local market strategy.

#### Key portfolios

Master layout, IKEA Mumbai India  
Living room project, Kohoku store, IKEA Japan  
Living room project, Tsuruhamma store, IKEA Japan  
Service Office renovation project, IKEA Thailand  
Built up the 2nd Store in Malaysia, IKEA Cheras Malaysia  
Built up the 1st Store in Thailand, IKEA Bangna Thailand

[Home and décor Malaysia Interview](#)

[Idea my home Interview on youtube](#)

[Kitchendio on youtube](#)

## KEY RESUME



### THAPAKORN SUJARIT APIRAK

Co-founder of 931AM

+66867864949

More than 12 years experienced in office furniture and design industry, including both interior design and space planning. To enhance a working experiences with different type of work and needs accordingly, especially for co-working space and opened space office.

#### Key portfolios

AIA headquarter office renovation  
Hubba co-working space  
Perfect group  
Siamsteel  
Rockworth  
Exteria, Modernform group public

[Posttoday Interview](#)

[AIA Office renovation Interview](#)

[D-Talk Interview](#)

[D-Talk Interview](#)

## KEY RESUME



### YOMMANA THANINPONG

Collaborator Designer  
+66898937876

A decade years of experience in Stone and Steel brand, this includes gathering information in order to tailor suit ideal solutions for client. Along with strong leadership and commitment to deliver an idea become reality from both designer thought and turnkey perspective.

#### Key portfolios

Residential Houses  
Chonburi Blood Lab  
19<sup>th</sup>@Chidlom  
Stone and Steel



## KEY RESUME



## KITTIPONG KITTIROJPHAN

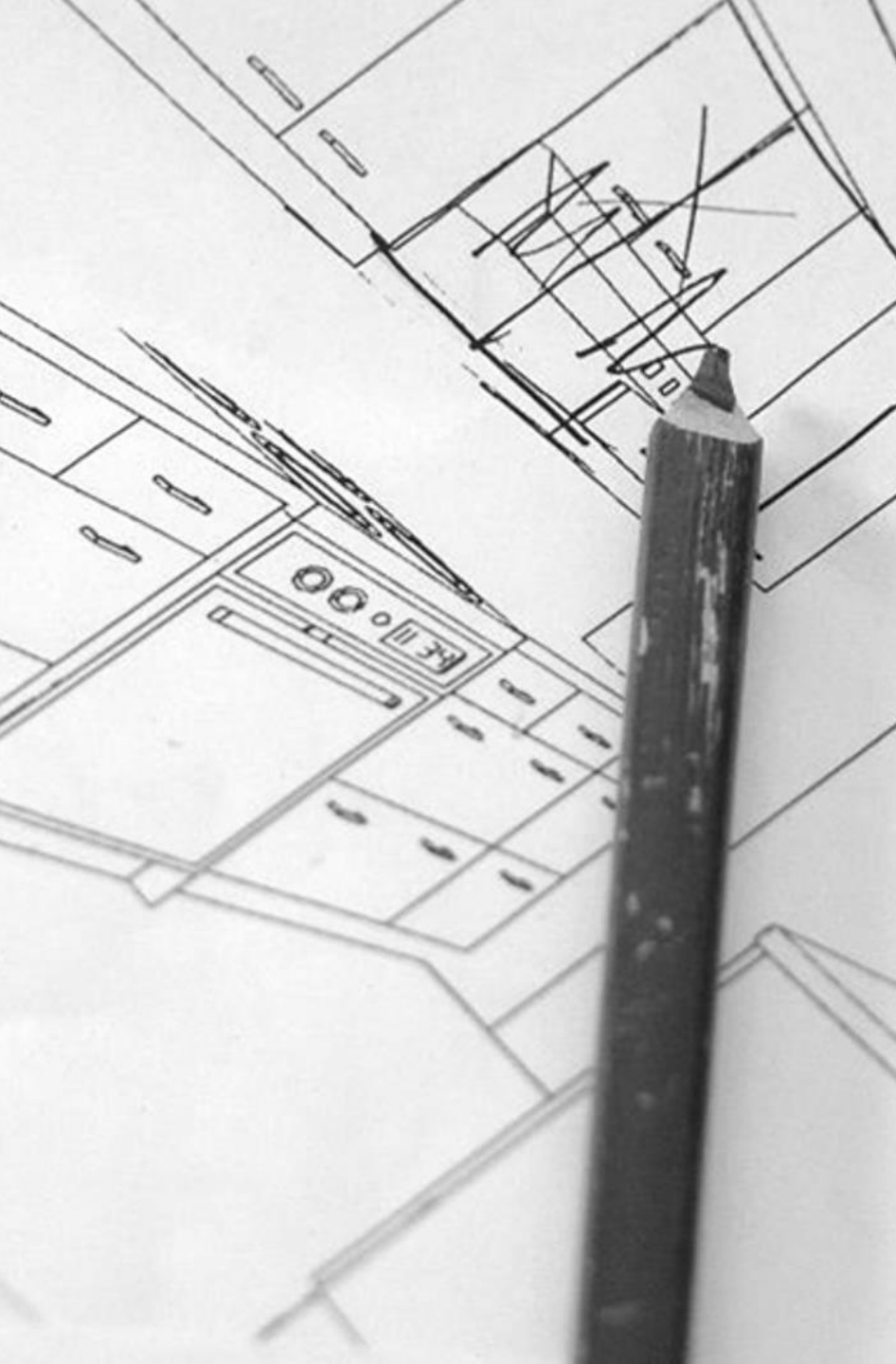
Collaborator Architect

A decade years of experience in architectural, with client needs first in mind combined with a deep understanding of architectural construction technique. Made conceptual design turn into a reality.

### Key portfolios

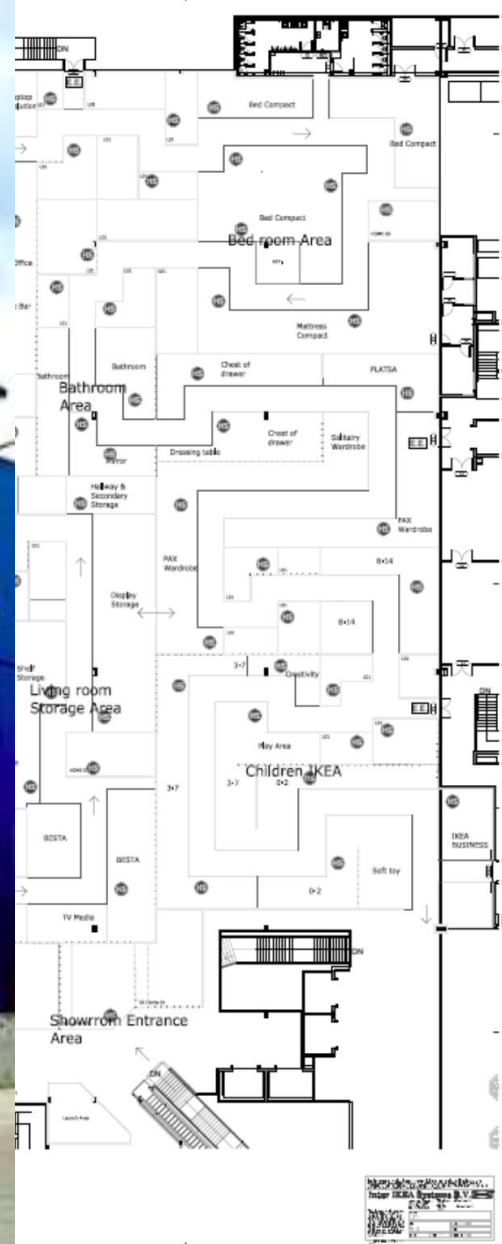
KMITL Workshop Building  
Raffle American School  
L.I.C. Agrotech Factory  
Relate Intertrade Office  
Keeper Proshop





# What we've done

Selected projects



**IKEA Mumbai**  
Mumbai, India

Master Layout Consultant





# **IKEA Cheras** **Cheras, KL, Malaysia**

Showroom Project Manager  
 IKEA main Co-ordinator  
 Interior design Manager





## **IKEA Bangna** Bangna, BKK, Thailand

Showroom Project co-ordinator  
Interior design manager





# **IKEA Kohoku** **Kohoku, Tokyo, Japan**

Living room rebuild Project  
 Interior Designer  
 Layout Planner





# **IKEA Service office** **Bangna, Bangkok, Thailand**

Interior design  
Master Layout  
Project Consultant



### โครงการปรับปรุงโรงปฏิบัติงาน

คณะสถาปัตยกรรมศาสตร์ สถาบันเทคโนโลยีพระจอมเกล้าเจ้าคุณทหารลาดกระบัง

โรงปฏิบัติงานไม้ ภาควิชาสถาปัตยกรรมภายใน



โรงปฏิบัติงานไม้ ภาควิชาสถาปัตยกรรมภายใน



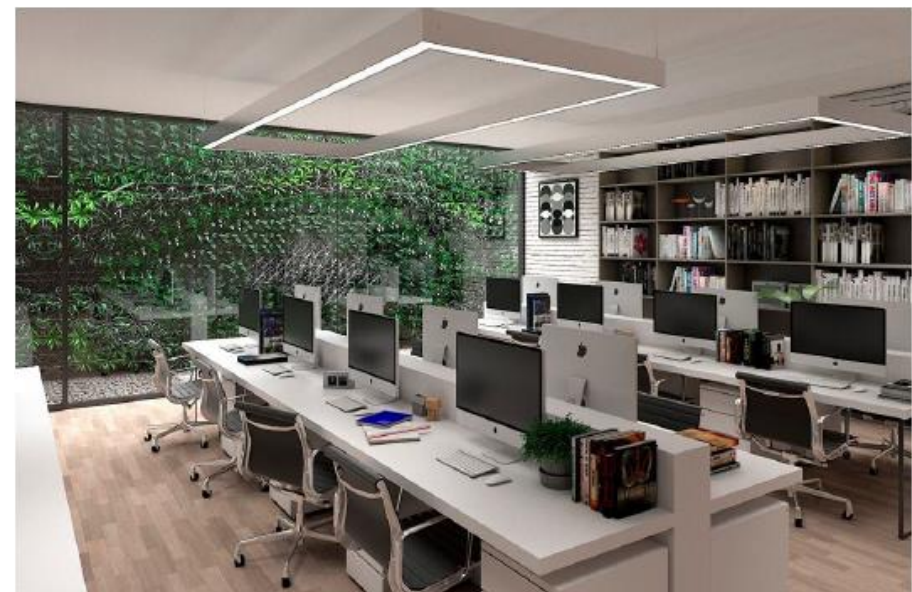
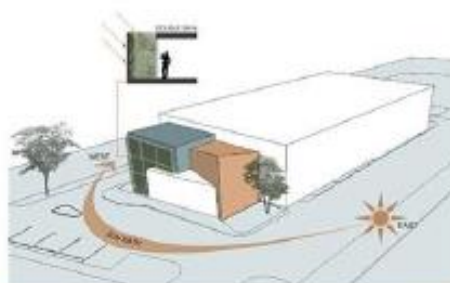
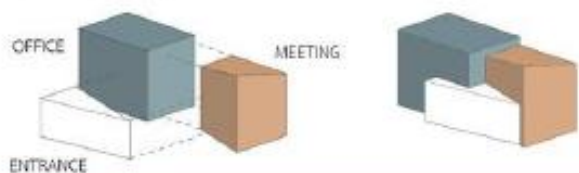
โรงปฏิบัติงานสิ่งทอ ภาควิชาศิลปอุตสาหกรรม

# WORKSHOP BUILDING for KMITL Ladkrabang, Bangkok

Architectural



Project : LIC Agrotech Factory  
Location : Ratchaburi  
Area : 2500 Sq.m.



Interior design  
Landscape  
Architectural

# L.I.C. AGROTECH FACTORY

Ratchaburi, Thailand



Interior design  
Landscape  
Architectural

**RELATE INTERTRADE Co., Ltd.**  
**Nawamin 153, Bangkok**





LAY-OUT PLAN  
SCALE 1:1000



Interior design  
Landscape  
Architectural

# **RAFFLE AMERICAN SCHOOL** Bang na, Samut Prakarn, Thailand



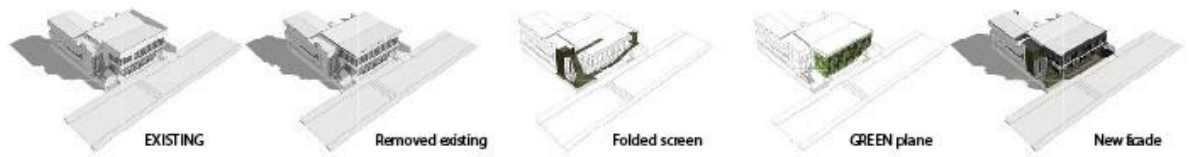
# KEEPER PROSHOP

Bang Khen, Bangkok

Interior design  
Landscape  
Architectural



LOCATION : CHIDLOM, BANGKOK, THAILAND  
 STATUS : COMPLETED  
 YEAR : 2015-2016  
 LAND SIZE : 1,460 SQ.M.  
 AREA : 2,450 SQ.M.  
 facade area : 1200 sqm.  
 CLIENT : 19TH@CHIDLOM  
 ARCHITECT : mod architects  
 LANDSCAPE : mod architects



# 19<sup>th</sup>@CHIDLOM

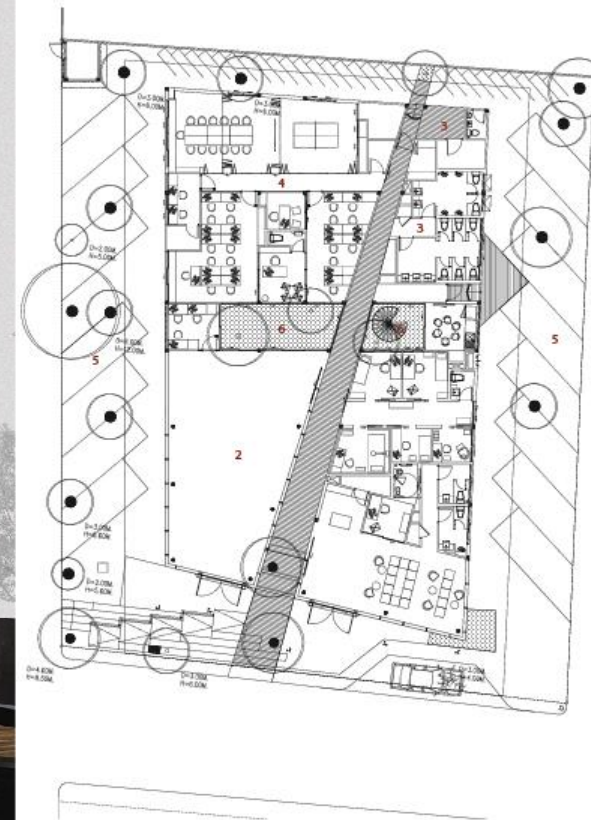
Chidlom, Bangkok

Interior design  
 Landscape  
 Architectural



## CHONBURI BLOOD LAB

TYPE : CLINIC  
LOCATION : BANGSEAN, CHONBURI, THAILAND  
STATUS : PRELIMINARY  
YEAR : 2015  
LAND SIZE : 1,260 SQ.M.  
AREA : 500 SQ.M.  
CLIENT : KHON AE  
ARCHITECT : MOD ARCHITECTS  
INTERIOR ARCHITECTS : MOD ARCHITECTS  
LANDSCAPE : MOD ARCHITECTS



## CHONBURI BLOOD LAB

Bangsean, Chonburi

Interior design  
Landscape  
Architectural



# PARINYA Sampeng, Bangkok

Interior design  
Merchandising Diagram



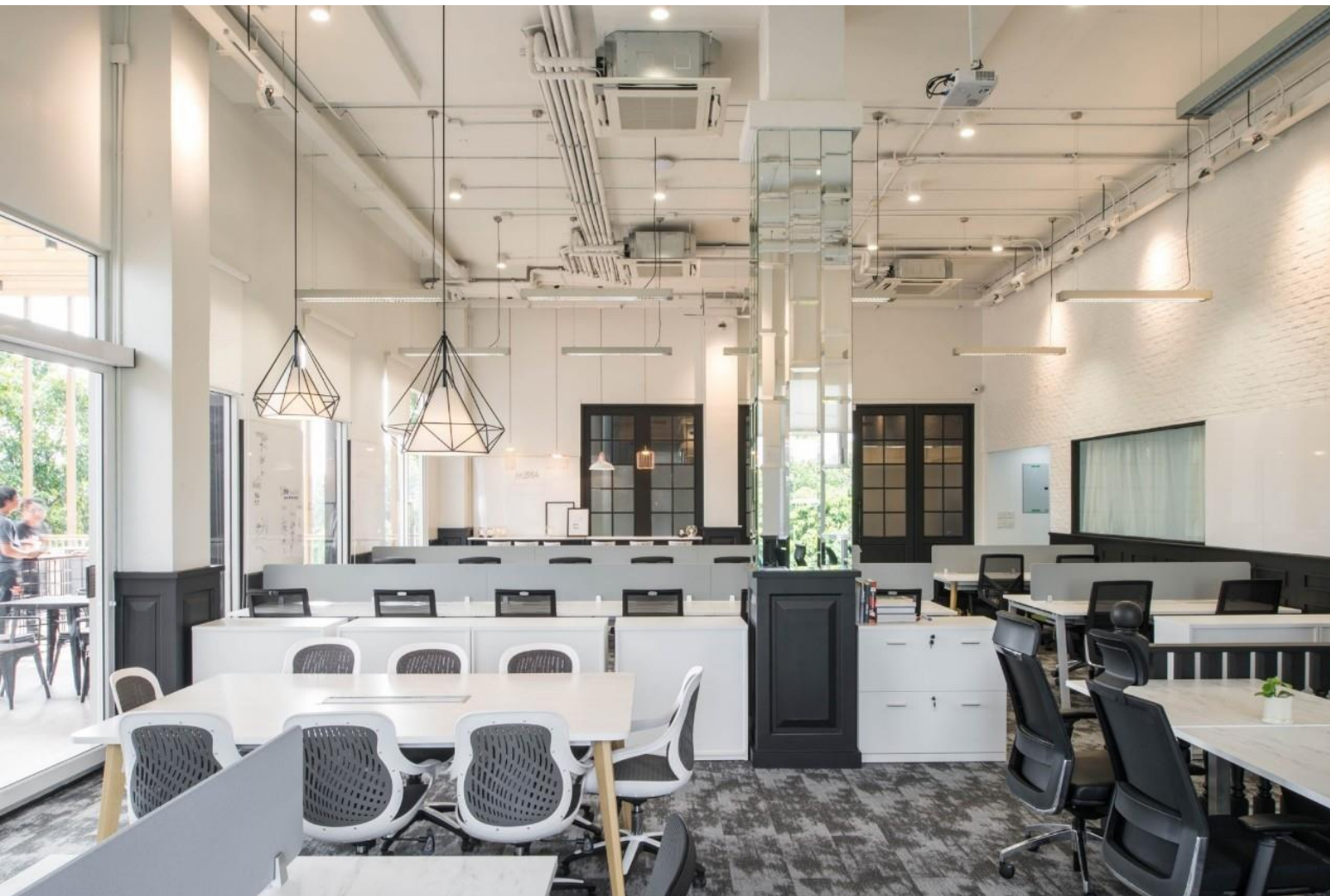


# VGI PUBLIC COMPANY LIMITED

Sathorn, Bangkok

Space planning



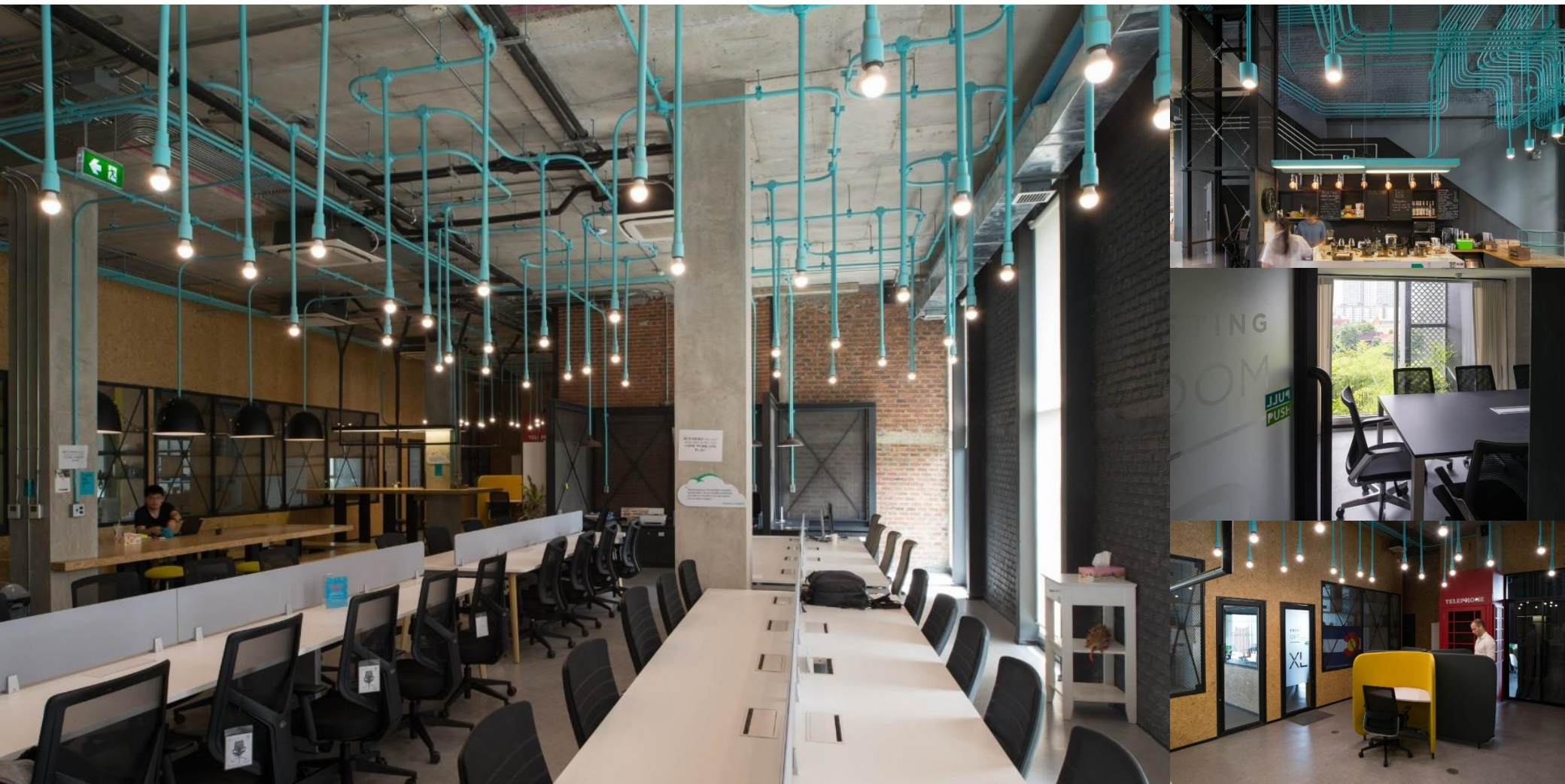


# HUBBA Headquarter

## Oonnuch, Bangkok

Space planning





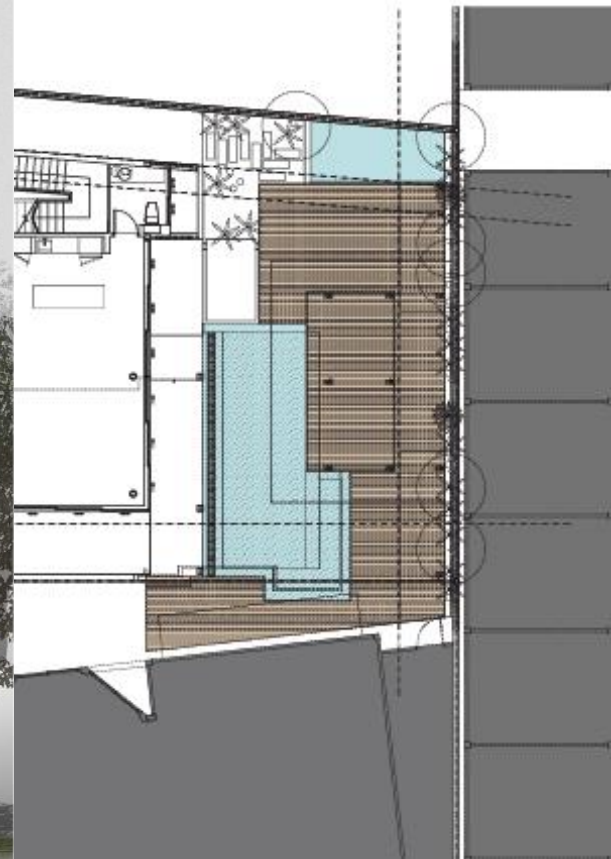
# HUBBA Habito Oonnuch, Bangkok

Space planning



## KHUN K HOUSE

TYPE : RESIDENTIAL  
LOCATION : CHAROEN KRUNG, BANGKOK, THAILAND  
STATUS : CONSTRUCTION PHASE  
YEAR : 2015  
LAND SIZE : 395 SQ.M.  
AREA : 725 SQ.M.  
CLIENT : KHUN K  
ARCHITECT : MOD ARCHITECTS  
INTERIOR ARCHITECTS : PAYOM DECOR



# KHUN K HOUSE

Charoen Krung, Bangkok

Interior design  
Landscape  
Architectural

## KHUN PU HOUSE

A-1506

TYPE: RESIDENTIAL

LOCATION: PHETCHABURI, THAILAND

STATUS: CONSTRUCTION PHASE

YEAR: 2015

LAND SIZE: 470 SQ.M.

AREA: 110 SQ.M.

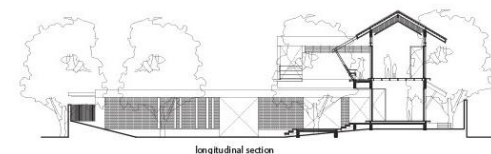
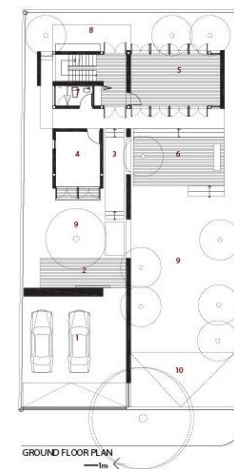
CLIENT: KHUN PU

ARCHITECT: MOD ARCHITECTS

INTERIOR ARCHITECTS: MOD ARCHITECTS

LANDSCAPE: ARCHITECTS

CONTRACTOR: PAYOM DECOR



- 1 GARAGE
- 2 WAITING AREA
- 3 LIVING AREA
- 4 BEDROOM
- 5 OUTDOOR DECK
- 6 OUTDOOR DECK
- 7 SHOWER ROOM
- 8 WASHING AREA
- 9 LAUNDRY
- 10 COURTYARD

Interior design  
Landscape  
Architectural

# KHUN PU HOUSE

Phetchaburi, Thailand



## KHUN PLE HOUSE

A-1504

TYPE: RESIDENTIAL  
LOCATION: SENA-NICOM VILLAGE, BANGKOK  
STATUS: CONSTRUCTION PHASE  
YEAR: 2015-2016  
SITE AREA: 1160 SQ.M.  
DESIGN AREA: 150 SQ.M.  
CLIENT: KHUN Natthaboon Triwattay  
ARCHITECT: MOD ARCHITECTS  
INTERIOR ARCHITECTS: MOD ARCHITECTS  
LANDSCAPE: MOD ARCHITECTS  
CONTRACTOR: PAYOM DECOR



# KHUN PLE HOUSE

## Sena Nicom Village, Bangkok

Interior design  
Landscape  
Architectural





# The River

## Charoen Nakhon, Bangkok

Interior design





# K.Ked&K.Heng House

Ladprao, Bangkok

Interior design



*Thank you.*